



Effects

from the Product to the Creation to exalt the Decorator's ability

Cebos

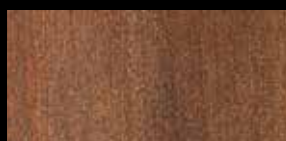


Effects

*from the Product to the Creation to exalt the Decorator's ability,
thanks to essential application cycles that can actually be reproduced*



CeboEffects
BARKODE



CeboEffects
OXYDIA



StrongEffects
DRAFT



StrongEffects
FUSION



IronEffects
SAND



IronEffects
RAIN



CeboEffects

BARKODE

with **BARKODE**

fantasy and technique

combine to create

delicate materic surfaces,

which are

unique and highly refined.





*Every room
acquires a
special charm,
whether entire walls
or squares and recesses
are decorated.*







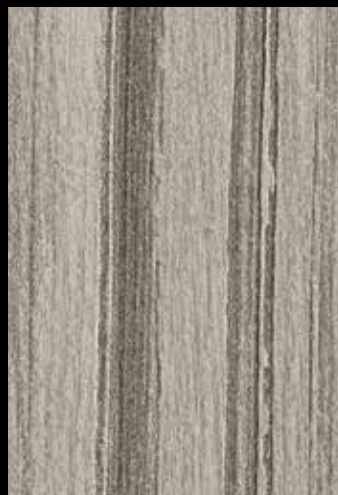
CeboEffects - BARKODE



Ceboldea + CeboStyle Antico Star Black
+ Cebolron Grigio



Ceboldea + CeboStyle Antico Brown Gold
+ Cebolron Nero



Ceboldea + CeboStyle Antico Silver 116/2
+ Cebolron Grigio 116/2



Ceboldea + CeboStyle Antico Silver 252/2
+ Cebolron Grigio 252/2



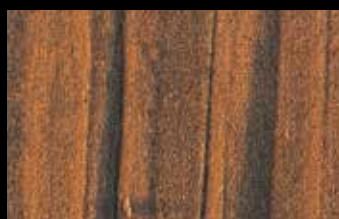
Ceboldea + CeboStyle Antico Bronze
+ Cebolron Nero



Ceboldea + CeboStyle Antico Silver 254/2
+ Cebolron Grigio 254/2



Ceboldea + CeboStyle Antico Light Gold
+ Cebolron Grigio



Ceboldea + CeboStyle Antico Copper
+ Cebolron Nero



Ceboldea + CeboStyle Antico Silver 253/2
+ Cebolron Grigio 253/2



Ceboldea + CeboStyle Antico Silver 106/2
+ Cebolron Grigio 106/2



Ceboldea + CeboStyle Antico Gold
+ Cebolron Grigio



Ceboldea + CeboStyle Antico Red Copper
+ Cebolron Nero



Ceboldea + CeboStyle Antico Silver 248/2
+ Cebolron Grigio 248/2



Ceboldea + CeboStyle Antico Silver 233/2
+ Cebolron Grigio 233/2

CeboEffects - BARKODE

Fantasy and technique combine to create modern and exclusive surfaces. Thanks to a basic application cycle and high quality products, Barkode allows to achieve delicate material decorations, which are unique and highly refined. Every room acquires a special charm whether entire walls or squares and recesses are decorated.

Surface treatment

On smooth clean surfaces, previously levelled where required, apply **CeboFix M**, a transparent priming fixative based on an acrylic micro-emulsion. CeboFix M is recommended in case of new or recently repaired walls, highly absorbent or chalky substrates and it must be applied by paintbrush, diluted 1:1 with water.

Application cycle BARKODE effect

Apply **Ceboldea** by paintbrush, in a uniform 2-3 mm thickness. Immediately decorate the product with the specific tool CeboBars (code A/16) to obtain vertical or horizontal stripes. When the product is still humid, slightly smoothen the decorations with the trowel Caress (code A/38). It is advisable to carry out the application and following decoration procedure in areas of 1 meter width at a time. Wait until Ceboldea is completely dry (6-8 hours) and sandpaper the surface to remove all imperfections.

Apply **CeboStyle Antico** in two coats with the appropriate CeboSi brush 4" size (code A/27) following the direction of the pattern previously created. The first coat must be dry before the application of the second coat.

After about 6-8 hours, when CeboStyle Antico is completely dry, apply one coat of **Cebolron** by stainless steel trowel, always respecting the direction of the previously designed decoration and taking care to remove the excess material with the same trowel so as to enhance the areas in relief.

Ceboldea

Water based acrylic paint for interiors that thanks to its particular formulation can be applied as a decorative coating to create special effects slightly in relief.

CeboStyle Antico

Water based, washable, full hiding paint with a metallic finish.

Cebolron Grigio e Nero

Water based acrylic semi-hiding finish, with micaceous and pearly pigments.





Ceboldea + CeboStyle Antico Silver 120/2
+ Cebolron Grigio 120/2



Ceboldea + CeboStyle Antico Silver 245/2
+ Cebolron Grigio 245/2



Ceboldea + CeboStyle Antico Golden Orange



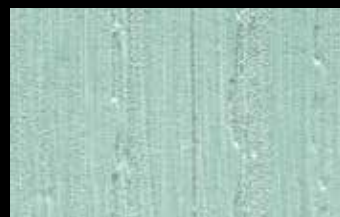
Ceboldea + CeboStyle Antico Golden Orange 121



Ceboldea + CeboStyle Antico Silver 240/2
+ Cebolron Grigio 240/2



Ceboldea + CeboStyle Antico Silver 223/2
+ Cebolron Grigio 223/2



Ceboldea + CeboStyle Antico Golden Orange 122



Ceboldea + CeboStyle Antico Silver 234/2
+ Cebolron Grigio 234/2



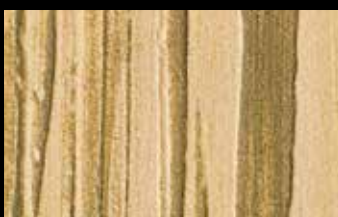
Ceboldea + CeboStyle Antico Silver 224/2
+ Cebolron Grigio 224/2



Ceboldea + CeboStyle Antico Golden White 114



Ceboldea + CeboStyle Antico Silver 104/2
+ Cebolron Grigio 104/2







Ceboldea + CeboStyle Antico Silver 229/2
+ Cebolron Grigio 229/2



Ceboldea + CeboStyle Antico Golden White



Ceboldea + CeboStyle Antico Golden White 106

	product	use	dilution (water)	approx. coverage	tool	drying time	colour
undercoat	CeboFix M	interiors	1:1	10 m ² /L		24 h	transparent
base coat	Ceboldea	interiors	ready to use	2-3 m ² /L		6-8 h	white
finish coat	CeboStyle Antico	interiors	ready to use	8 m ² /L		4-6 h	CeboKit and CCS
finish coat	Cebolron	interiors	ready to use	15-18 m ² /L		4-6 h	CeboKit and CCS

Preparation of the colours:

CeboStyle Antico Silver	CeboKit /2	Cebolron Grigio	CeboKit /2
5 L	2x25 ml	2,5 L	2x25 ml
2,5 L	1x25 ml	1 L	20 ml
1 L	10 ml		

CeboStyle Antico Golden White and Golden Orange	CeboKit
2,5 L	1x25 ml
1 L	10 ml



CeboEffects

OXYDIA

*inspired by the **corrosive** force*

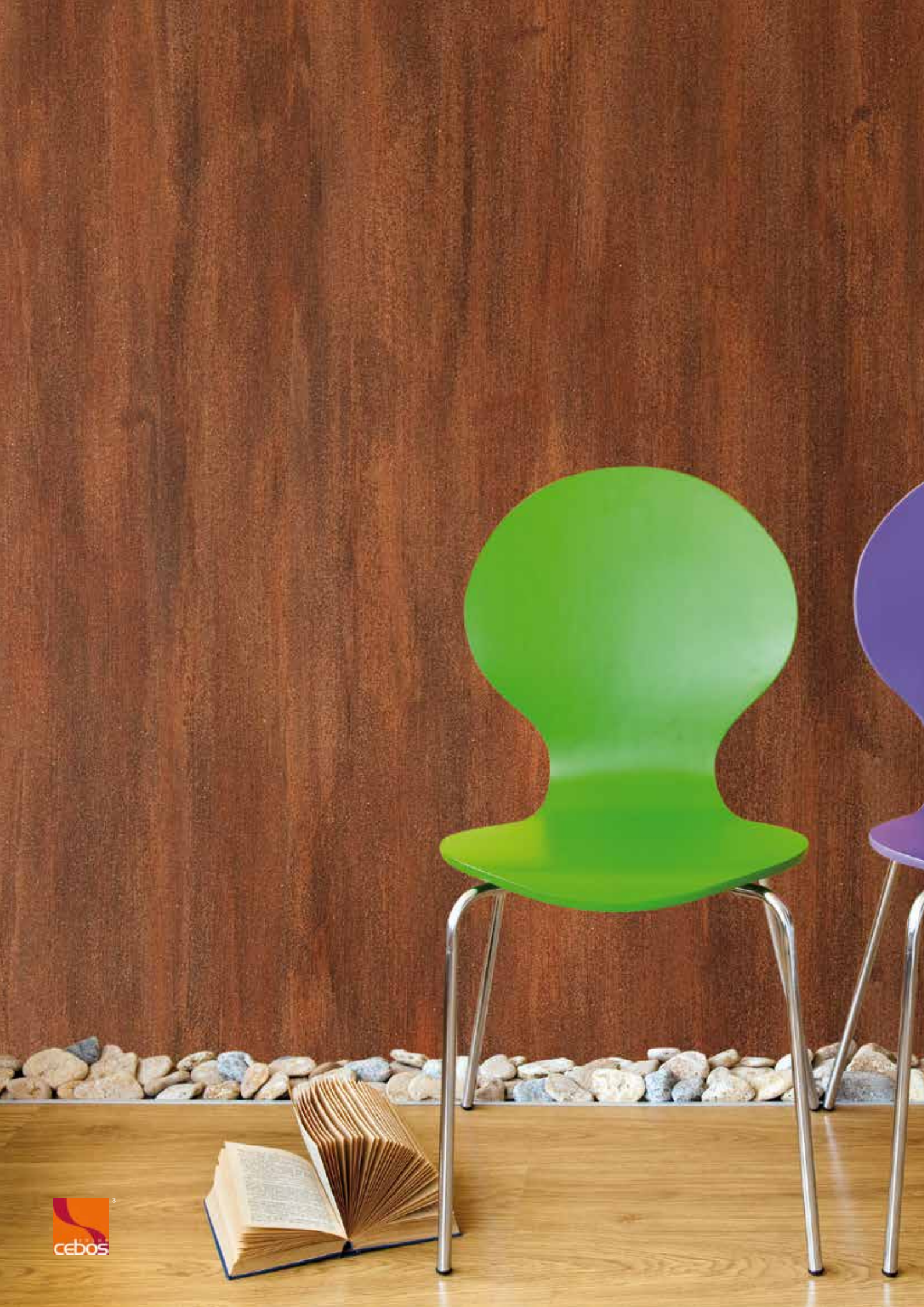
of time on material,

OXYDIA *gives the possibility*

to reproduce on the surfaces

the tactile and visual appearance

*of the **oxidised** metals.*





*Walls lighten
up with metallic glows,
giving life to creations
full of personality
and character.*







CeboEffects - OXYDIA



CeboStone 254/2
1nd colour Cebolron Nero 254/2 2nd colour Cebolron Grigio 256/2



CeboStone 254/2
1nd colour Cebolron Grigio 256/2 2nd colour Cebolron Nero 234/2



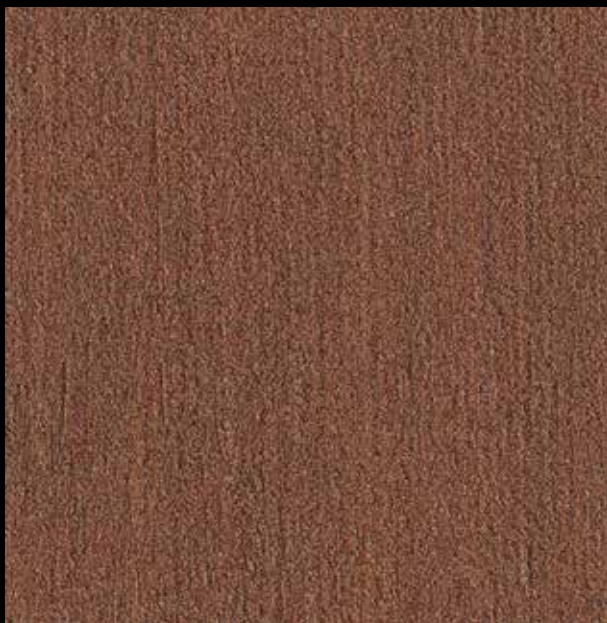
CeboStone 254/2
1nd colour Cebolron Nero 256/2 2nd colour Cebolron Grigio 256/2



CeboStone 254/2
1nd colour Cebolron Nero 228/2 2nd colour Cebolron Grigio 256/2



CeboStone 254/2
1nd colour Cebolron Grigio 256/2 2nd colour Cebolron Nero 256/2



CeboStone 254/2
1nd colour Cebolron Grigio 256/2 2nd colour Cebolron Nero 248/2



CeboStone 254/2
1nd colour Cebolron Grigio 256/2 2nd colour Cebolron Grigio 256/2

CeboEffects - OXYDIA

Inspired by the corrosive force of time on material, this decorative effect gives the possibility to reproduce on the surfaces the tactile and visual appearance of the oxidised metals. Thanks to the skilful combination of colours and textures, walls lighten up with metallic glows ranging from rust to verdigris and to steel, giving life to creations full of personality and character.

Surface treatment

It is possible to apply Oxydia effect on all types of supports. Carefully clean the substrate and apply by roller one coat of CeboFix R primer, diluted 20-30% with water.

Application cycle OXYDIA effect

Apply one coat of **CeboStone colour 254/2** with a medium size paintbrush: cover the surface with vertical brush-strokes working a stripe of about 50 cm; go over the surface with the empty paintbrush held to use the short side so as to highlight the design. Before the complete drying of the product, smooth the surface with the specific plastic trowel (Cod. A/18); work from top to bottom, pressing lightly to compact eventual deposits of product.

When CeboStone is perfectly dry, apply Cebolron Grigio or Nero. The final effect is obtained by applying two layers of coloured Cebolron as indicated on the Colour Card for each sample.

Apply the first colour of **Cebolron** with a synthetic sponge (Cod. A/4) following the direction of the decoration, to reach the full cover of the surface. When the first colour is completely dry (after about 6-8 hours) apply the second colour with the same technique and let the underlying colour appear.

CeboFix R

Water based, acrylic, pigmented fixative containing fine quartz sands.





CeboStone 254/2
1nd colour Cebolron Grigio 256/2 2nd colour Cebolron Nero 232/2 *



CeboStone 254/2
1nd colour Cebolron Nero 223/2 2nd colour Cebolron Grigio 254/2 *



CeboStone 254/2
1nd colour Cebolron Nero 232/2 2nd colour Cebolron Grigio 256/2 *



CeboStone 254/2
1nd colour Cebolron Nero 254/2 2nd colour Cebolron Grigio 234/2



CeboStone 254/2
1nd colour Cebolron Grigio 116/2 2nd colour Cebolron Nero 116/2



CeboStone 254/2
1nd colour Cebolron Grigio 232/2 2nd colour Cebolron Nero 256/2 *






CeboStone 254/2
1nd colour Cebolron Nero 116/2 2nd colour Cebolron Grigio 116/2

CeboStone

Water based, acrylic finish for interiors and exteriors. The particular variance of its texture allows to obtain original decorative effects.

Cebolron Grigio and Nero

Water based, acrylic, semi-hiding finish for interiors and exteriors, with micaceous and pearly pigments.

	product	use	dilution (water)	approx. coverage	tool	drying time	colour
base coat	CeboFix R	int/ext	20-30%	10-12 m ² /L		24 h	white
finish coat	CeboStone	int/ext	max 5%	6 m ² /L		6-8 h	CeboKit and CCS
finish coat	Cebolron 1nd colour	int/ext	ready to use	10 m ² /L		4-6 h	CeboKit and CCS
	Cebolron 2nd colour			16 m ² /L			

Preparation of the colours:

CeboStone	CeboKit 254/2	Cebolron Grigio, Nero	CeboKit /2
10 L	4x25 ml	2,5 L	2x25 ml
5 L	2x25 ml	1 L	20 ml
1 L	10 ml		

N.B.: these colours are lithographic prints and must therefore be considered as indicative only, and not binding.

DRAFT

FUSION



StrongEffects

DRAFT FUSION

strength and thickness

are the distinctive characteristics of

STRONG *effects*

thanks to the combination

of the metallic soul

and the highly materic surface.





Rough and solid

surfaces

create atmospheres

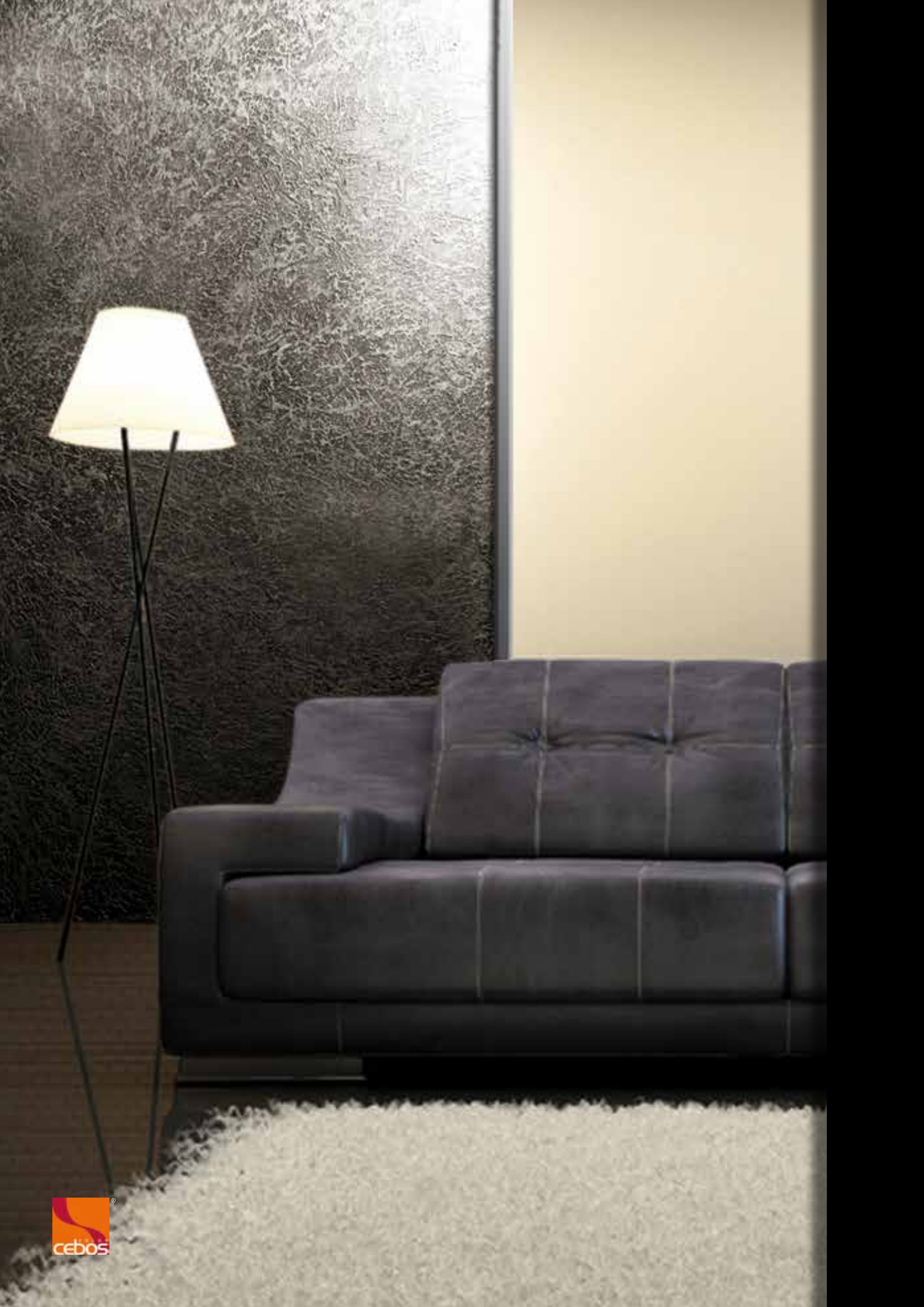
full of energy.



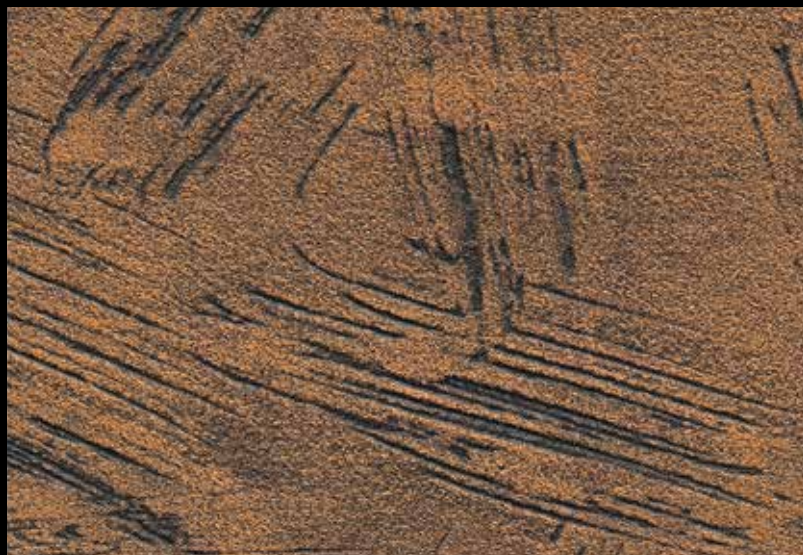




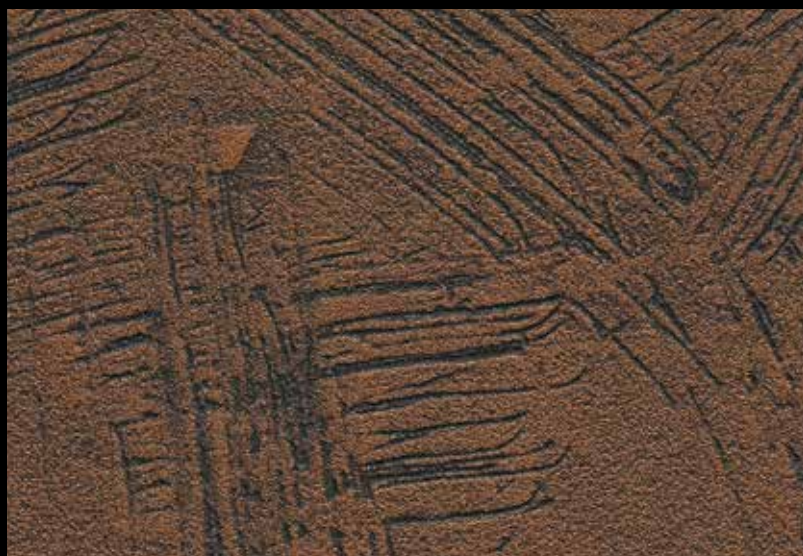








CeboStrong + CeboStyle Antico Copper + Cebolron Nero



CeboStrong + CeboStyle Antico Bronze + Cebolron Nero



CeboStrong + CeboStyle Antico Red Copper + Cebolron Nero

StrongEffects - DRAFT & FUSION

Strength and Thickness are the distinctive characteristics of Draft and Fusion effect. The highly materic surface created by CeboStrong together with the metallic and micaceous essence of CeboStyle Antico and Cebolron give the possibility to design rough and solid surfaces. Thanks to these effects every wall or element becomes an unique and exclusive artwork to enrich determined and full of energy atmospheres.

Surface treatment

It can be applied on all substrates such as gypsum, lime or cement based fine render. Clean the surface then apply by roller a coat of CeboFix R, acrylic fixative, diluted with 20-30% water.

Application cycle DRAFT effect

On the prepared surface apply **CeboStrong** with a stainless steel trowel in a non-uniform layer, constantly varying the direction and thickness of the product; when the product is still fresh decorate the surface engraving the desired pattern with CeboSign specific tool (code A/35). Prior to the complete drying of the product, smooth the surface with the trowel pressing lightly the parts in relief. Always remember to often change the working direction to create irregular areas. Wait until CeboStrong is completely dry (10-12 hours) and sandpaper the surface to remove all imperfections.

Apply two coats of **CeboStyle Antico** in the desired colour with CeboSi 4" brush (code A/27). The product must be dry between coats.

When **CeboStyle Antico** is thoroughly dry, (about 6-8 hours), apply one coat of **Cebolron** with a stainless steel trowel, taking care to remove the excess product to enhance the areas in relief.

Application cycle FUSION effect

On the prepared surface apply **CeboStrong** with a stainless steel trowel in a uniform layer and with a minimum thickness of 3 mm; decorate immediately the product with the special rag-stippling trowel (code A/11). Decorate the surface in an irregular pattern. Prior to the complete drying of the product, smooth the surface with the trowel pressing lightly the parts in relief. Always remember to often change the working direction to create irregular areas. Wait until CeboStrong is completely dry (10-12 hours); if necessary sandpaper the surface to remove all imperfections.

Apply two coats of **CeboStyle Antico** in the desired colour with CeboSi 4" brush (code A/27). The product must be dry between coats.

When **CeboStyle Antico** is thoroughly dry (6-8 hours) apply one coat of Cebolron with a stainless steel trowel, taking care to remove the excess product to enhance the areas in relief.





CeboStrong + CeboStyle Antico Copper + Cebolron Grigio



CeboStrong + CeboStyle Antico Bronze + Cebolron Nero



CeboStrong + CeboStyle Antico Brown Gold + Cebolron Nero



CeboStrong + CeboStyle Antico Light Gold + Cebolron Grigio



CeboStrong + CeboStyle Antico Copper + Cebolron Nero



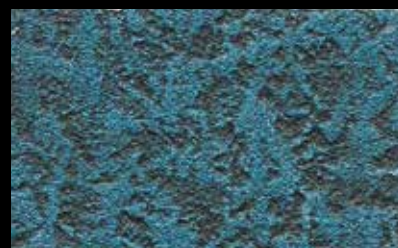
CeboStrong + CeboStyle Antico Ruby Red + Cebolron Nero



CeboStrong + CeboStyle Antico Gold + Cebolron Grigio



CeboStrong + CeboStyle Antico Gold + Cebolron Nero



CeboStrong + CeboStyle Antico Bleu + Cebolron Nero



CeboStrong + CeboStyle Antico Silver + Cebolron Grigio



CeboStrong + CeboStyle Antico Silver + Cebolron Nero



CeboStrong + CeboStyle Star Black + Cebolron Nero

CeboStrong: water based acrylic coating for interiors. It has excellent filling properties and can be applied in medium/high thick layers to create special material effects in relief.

CeboStyle Antico: water based, washable, full hiding paint with a metallic finish.

Cebolron Grigio and Nero: Water based acrylic semi-hiding finish, with micaceous and pearly pigments.

	product	use	dilution (water)	approx. coverage	tool	drying time	colour
undercoat	CeboFix R	interiors	20-30%	10-12 m ² /L		24 h	white
base coat	CeboStrong DRAFT effect	interiors	ready to use	1,5 m ² /L	   	6-8 h	white
	CeboStrong FUSION effect						
finish coat	CeboStyle Antico	interiors	ready to use	6-7 m ² /L		4-6 h	CeboKit and CCS
finish coat	Cebolron	interiors	ready to use	12-15 m ² /L		4-6 h	Grigio and Nero basis

N.B.: these colours are lithographic prints and must therefore be considered as indicative only, and not binding.

SAND

RAIN



IronEffects

SAND RAIN

high quality and captivating design

are the characteristics of

IRON *collection*

with great brightness and

tactile result.





Steel rain

and metallic sand

give the surfaces a

chrome-plated look of

strong impression,

providing the surrounding areas

*with a **resolute** but*

***comfortable** feeling.*







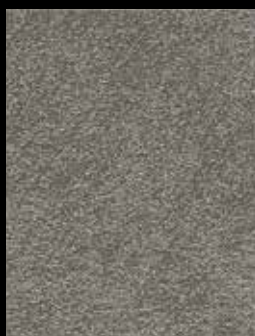


IronEffects - RAIN



Cebolron Cromo on CeboStone 221 F

IronEffects - SAND



Cromo 221/2 on CeboStone 221 F



Cromo 256/2 on CeboStone 221 F



Cromo 230/2 on CeboStone 221 F



Cromo 221/1 on CeboStone 221 F



Cromo 256/1 on CeboStone 221 F



Cromo 230/1 on CeboStone 221 F



Cromo 254/1 on CeboStone 221 F



Cromo 233/1 on CeboStone 221 F



Cromo 241/2 on CeboStone 221 F

IronEffects - SAND & RAIN

High quality and captivating design are the characteristics of IronEffects collection with great brightness and tactile result.

With Sand and Rain effect creativity, together with technical and aesthetic research, give birth to futuristic decoration.

Thanks to the ability of the decorator, steel rain and metallic sand give the surfaces a chrome-plated look of strong impression, providing the surrounding areas with a resolute but comfortable feeling.

Surface treatment

It can be applied on all substrates such as gypsum, lime or cement based fine render. Clean the surface then apply by roller a coat of CeboFix R, acrylic fixative, diluted with 20-30% water.

Application cycle SAND effect

Apply one coat of **CeboStone colour 221 F** with a medium size paintbrush in crossed brush-strokes so as to obtain alternating smooth and rough areas.

When CeboStone is completely dry (6-8 hours) apply one coat of **Cebolron Cromo** with CeboSi paint brush (code A/27): dip the brush into the product and apply to the surface avoiding clear-cut squaring.

Application cycle RAIN effect

Apply one coat of **CeboStone colour 221 F** with a medium size paintbrush; work vertically or horizontally according to the final effect chosen. When the product is still humid decorate the surface in the same direction with the specific tool for Rain effect (Code A/7) so as to mark and emphasize the pattern given with the paintbrush. It is advisable to apply and decorate the product in stripe of about one meter.

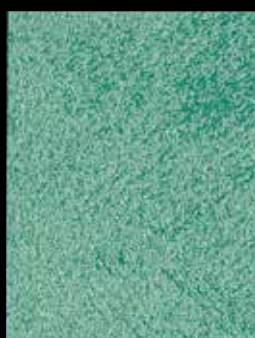
When CeboStone is completely dry (6-8 hours) apply one coat of **Cebolron Cromo** with CeboSi paint brush (code A/27): dip the brush into the product and apply in regular brush strokes to follow the direction of the previous application.

*For both effects, in order to obtain a more **uniform appearance and a more highlighted chrome-plated look**, it is possible to give a second coat of Cebolron Cromo in the same way as the first coat, respecting the drying time between coats (4-6 hours).*





Cebolron Cromo on CeboStone 221 F



Cromo 251/1 on CeboStone 221 F



Cromo 250/1 on CeboStone 221 F



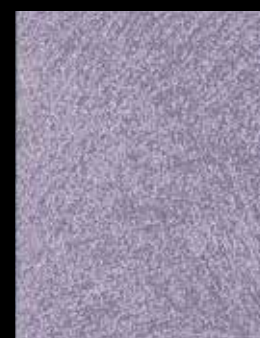
Cromo 235/2 on CeboStone 221 F



Cromo 224/1 on CeboStone 221 F



Cromo 223/1 on CeboStone 221 F



Cromo 243/2 on CeboStone 221 F



Cromo 234/2 on CeboStone 221 F



Cromo 240/2 on CeboStone 221 F







Cromo 121/2 on CeboStone 221 F

CeboStone

Water based, acrylic finish for interiors and exteriors, ideal on all substrates.

Cebolron Cromo

Water based, acrylic finish for interiors with special metallic pigments which give the surfaces a chrome-plated effect.

	product	use	dilution (water)	approx. coverage	tool	drying time	colour
undercoat	CeboFix R	interiors	20-30%	10-12 m ² /L		24 h	white
base coat	CeboStone SAND effect	interiors	10%	7-8 m ² /L		6-8 h	CeboKit and CCS
	CeboStone RAIN effect						
finish coat	Cebolron Cromo	interiors	ready to use	6-8 m ² /L		4-6 h	CeboKit and CCS

Preparation of the colours:


CeboStone	CeboKit 221/F
10 L	2x100 ml
5 L	1x100 ml
1 L	20 ml

Cebolron Cromo	CeboKit /1	CeboKit/2
2,5 L	25 ml	2x25 ml
1 L	10 ml	20 ml

N.B.: these colours are lithographic prints and must therefore be considered as indicative only, and not binding.



Cebos Color srl - Sistemi decorativi murali
info@cebos.it - www.ceboscolor.it

 prodotto italiano

